

16" Stand Fan
Model No.: USSF-718D3
Operation Instructions
READ AND SAVE THESE INSTRUCTIONS

Caution:

Read rules for safe operation and instructions carefully.

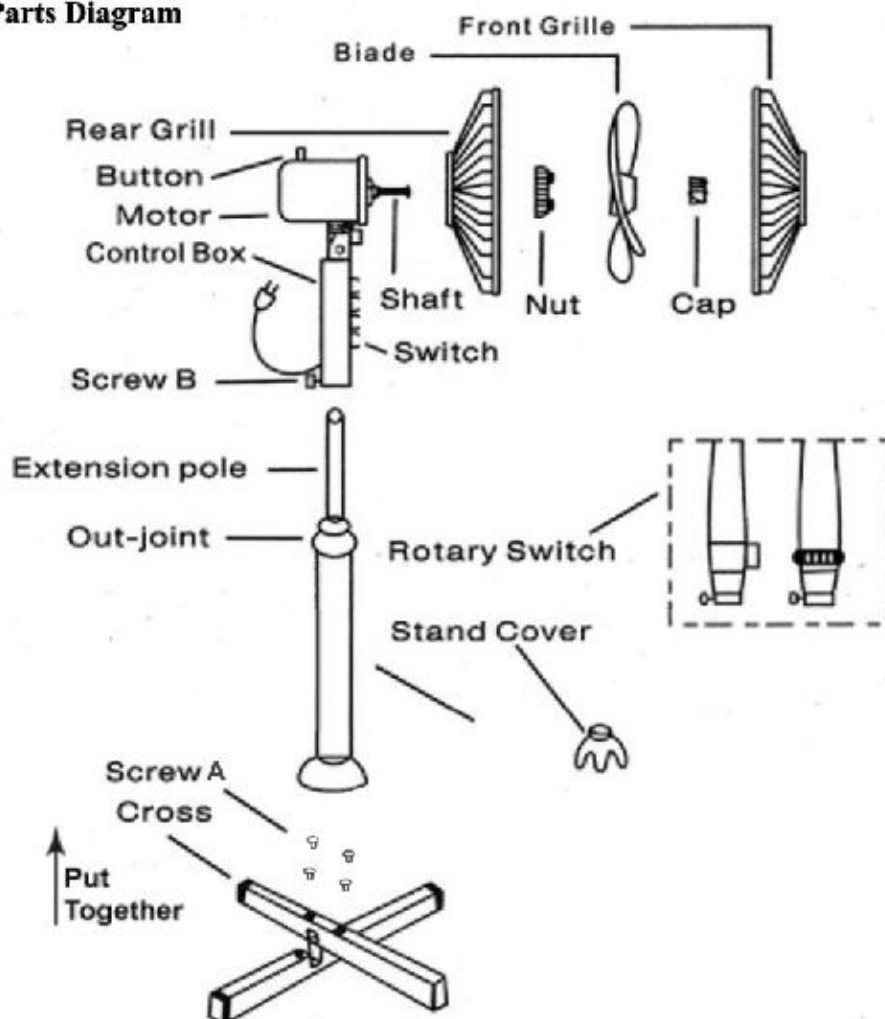
Warning:

If the supply cord is damaged, it must be replaced by the supplier or its service agent or a similarly qualified person in order to avoid a hazard.

Rules for Safe operation

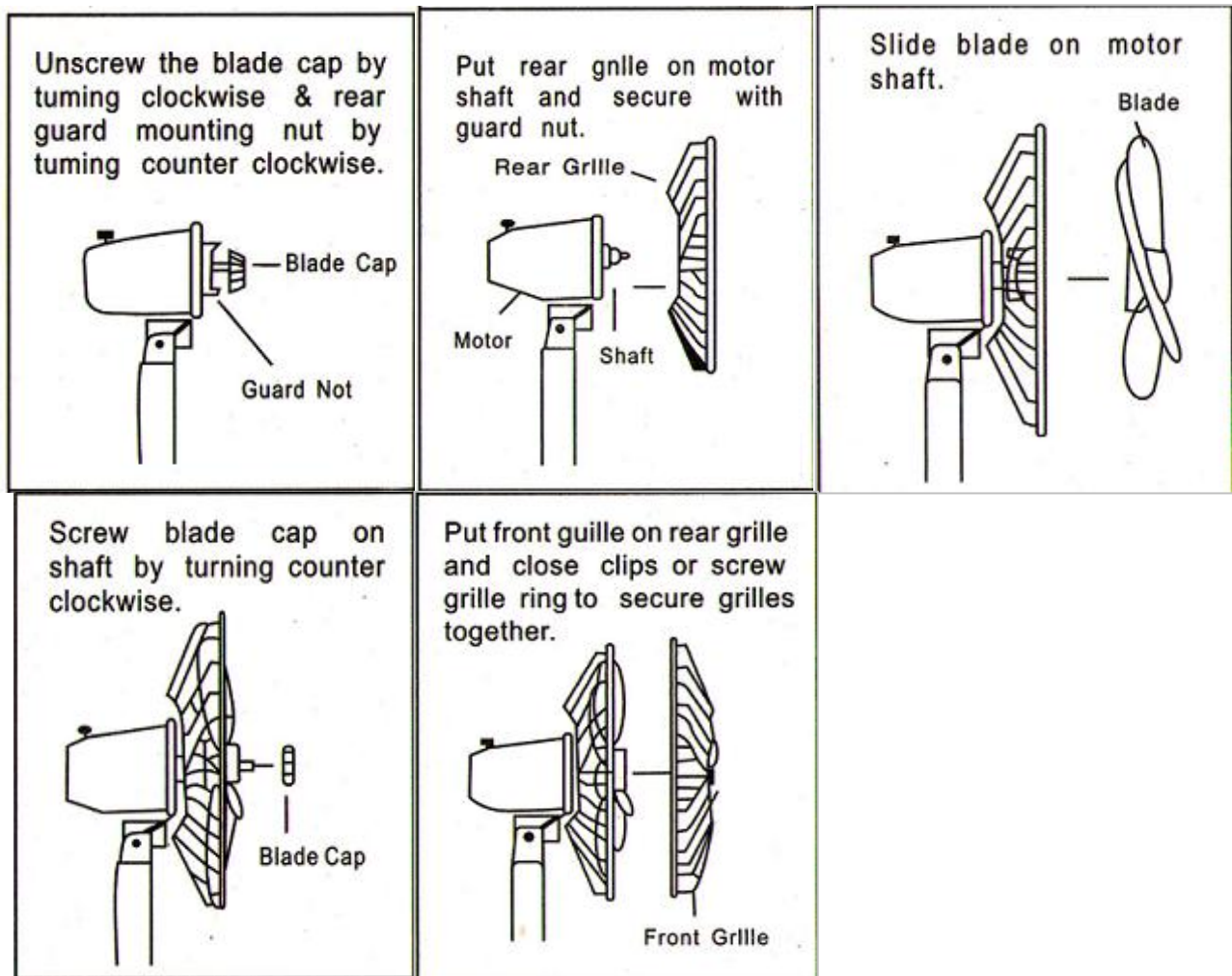
1. Never insert fingers, pencils, or any other object through the grill when fan is running.
2. Disconnect fan when moving from one location to another.
3. Disconnect fan when removing grills for cleaning.
4. Be sure fan is on a stable surface when operating to avoid overturning.
5. DO NOT use fan in window. Rain may create electrical hazard.
6. Complete the assembly of the fan before switching on the fan.

Parts Diagram



Assembling:

1. Put spring in stand tube from the tube bottom, tighten stand tube to stand base with screw A.
2. Unscrew out-joint. but the stand cover on the stand base, pull the extension pole out then tighten the out-joint again.
3. Place control box firmly on top of extension pole, tighten screw B.
4. For grill assembling, pls. refer to below descriptions and drawings.



Cleaning

1. Be sure to unplug from the electrical supply source before cleaning.
2. Plastic parts should be cleaned with mild soap and a damp cloth sponge. Thoroughly to remove soap film with clean water.
3. To disassemble each part, reverse the order assembly.
4. Be sure not to make water or other liquid enter the inside of motor.

Tech. Data:

230V-50Hz, 45W, Class II, Made in P.R.C.